

easyname

Your professional domain and hosting partner

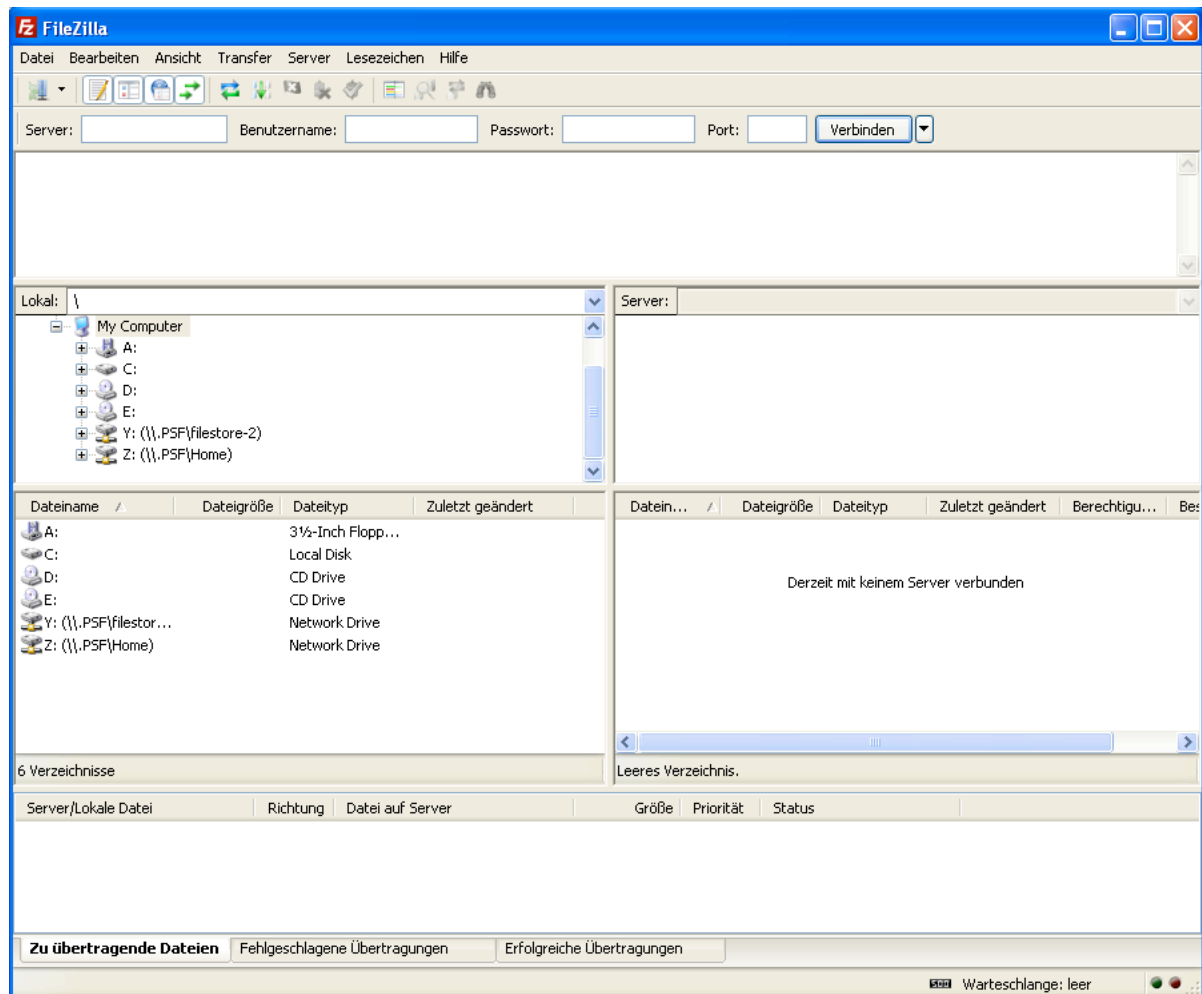
Manual

FileZilla



Download the latest version of FileZilla to your computer - use the following link to download the latest version: <http://filezilla-project.org/>
After downloading, install FileZilla to your computer.

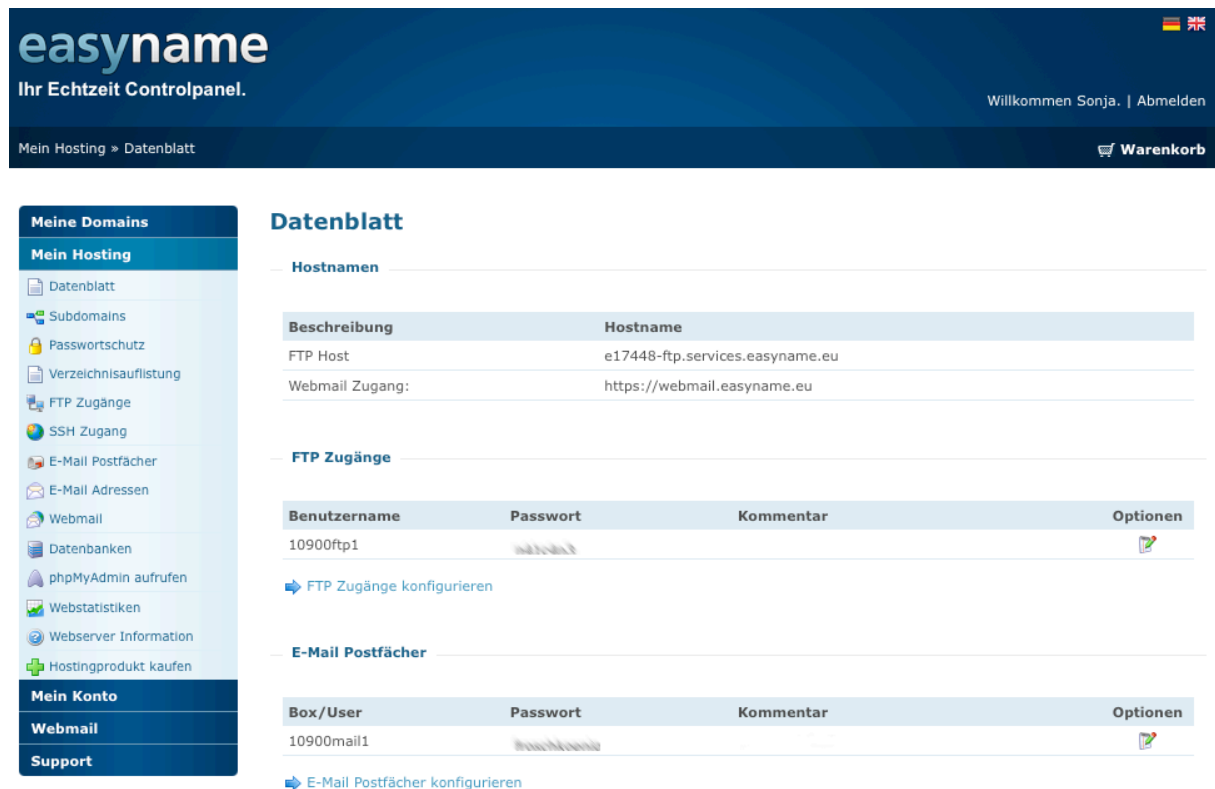
By starting FileZilla, the following window opens:



On the left side of the program-screen you see the directory structure of your computer. In the right column you will find the directory structure of your web host, after connecting to the easyname webserver.

In the top bar, you have to specify the data of the easyname webserver. For the required data see below:

Log into the easyname controlpanel <http://my.easyname.eu> and click on „My Hosting“ > „Datasheet“



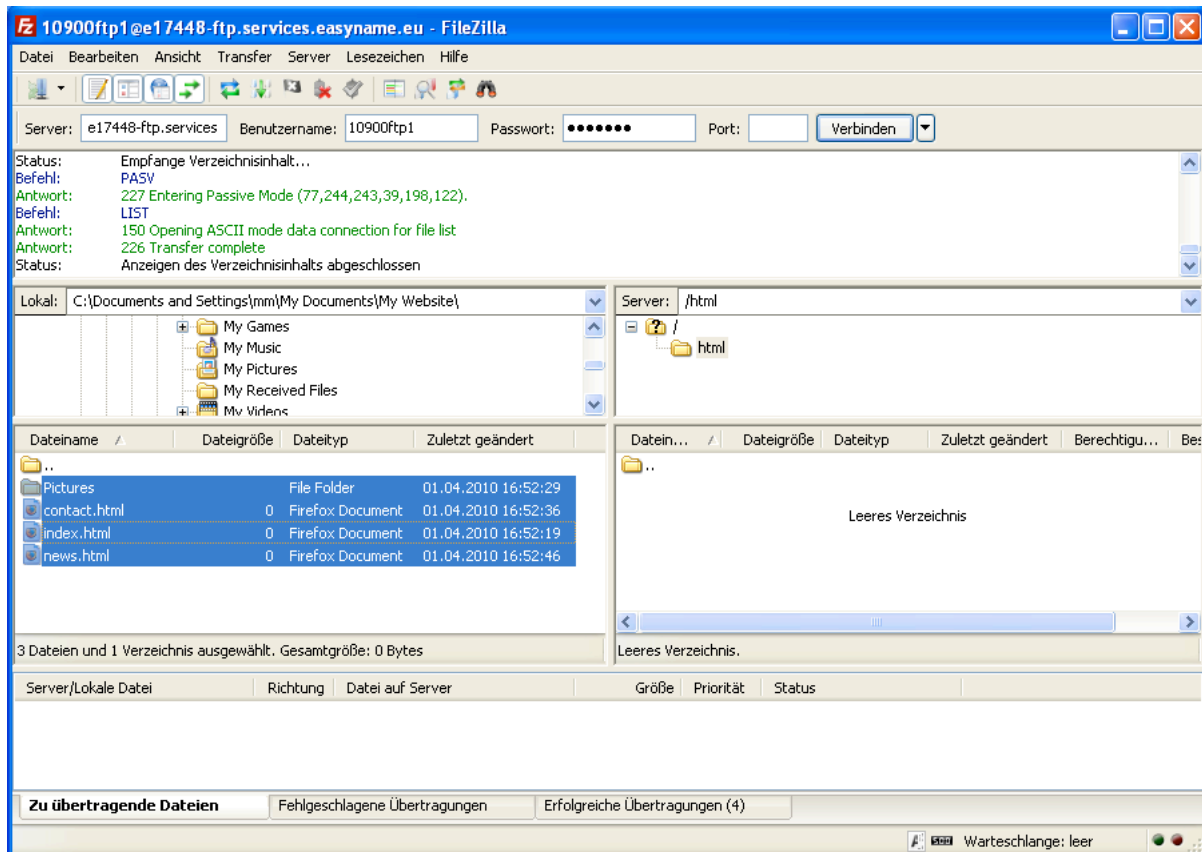
The screenshot shows the 'easyname' control panel interface. The main content area is titled 'Datenblatt' and is divided into three sections:

- Hostnamen:** A table with two columns: 'Beschreibung' and 'Hostname'. It lists 'FTP Host' with hostname 'e17448-ftp.services.easyname.eu' and 'Webmail Zugang' with URL 'https://webmail.easyname.eu'.
- FTP Zugänge:** A table with four columns: 'Benutzername', 'Passwort', 'Kommentar', and 'Optionen'. It shows a user '10900ftp1' with a masked password and a configuration icon. A link 'FTP Zugänge konfigurieren' is provided below.
- E-Mail Postfächer:** A table with four columns: 'Box/User', 'Passwort', 'Kommentar', and 'Optionen'. It shows a mailbox '10900mail1' with a masked password and a configuration icon. A link 'E-Mail Postfächer konfigurieren' is provided below.

The left sidebar contains navigation options under 'Meine Domains' and 'Mein Hosting', including 'Datenblatt', 'Subdomains', 'Passwortschutz', 'Verzeichnisauflistung', 'FTP Zugänge', 'SSH Zugang', 'E-Mail Postfächer', 'E-Mail Adressen', 'Webmail', 'Datenbanken', 'phpMyAdmin aufrufen', 'Webstatistiken', 'Webserver Information', and 'Hostingprodukt kaufen'. Below this are 'Mein Konto', 'Webmail', and 'Support'.

Here you will find all necessary information to connect with your Webhost. The relevant data for you are: FTP Host, Username and Password of the FTP Server.

Now enter the login information into the top bar (see picture below) and then click on Connect. The field "Port" should be empty.



On the left column you have to navigate through the directory structure of your computer to your web pages. Then select the entire contents of web pages and drag them to the right side (into the "html" folder). After this action the selected files will be transferred to your webhost on easyname.

Once all data has been copied, you can close FileZilla.





Please notice that the starting/first page of your homepage needs to be named index.html, index.htm or index.php

Finally, you have to configure your Subdomain-settings.

Log into the easyname controlpanel again <http://my.easyname.eu> and click on [My domains] -> [Manage] (choose desired domain) -> [Web]. Now you should see the Subdomain options for your domain.

Click on the "Edit" icon (see picture) in the row of your domain. If there is no entry for your domain click on "Add new Subdomain" and type "www." into the textfield.

The screenshot shows the control panel for the domain easynametest.com. The breadcrumb trail is "Meine Domains » Domain easynametest.com » Domains und Subdomains". The page title is "Domain: easynametest.com". There are tabs for "Web", "Mail", "Kontakt Daten", "Verlängerung", "Transfer", and "DNS". The "Web" tab is active, showing "Domains und Subdomains". A message states: "Hier haben Sie die Möglichkeit Domains und Subdomains (für Hosting, Weiterleitungen, Visitenkarten und den 'Domain geparkt' Hinweis) einzutragen und zu bearbeiten." Below this is a link "Neue Web Subdomain hinzufügen »". A table lists subdomains:

Name	Aktion	Optionen
easynametest.com	Weiterleitung nach "http://www.easynametest.com"	 
www.easynametest.com	Geparkt	 

The "edit icon" for the www.easynametest.com row is circled in red.

In the last step select "Show webpace content" and enter in the path field only one a slash (see picture below) befor clicking "Save.". Now the webserver knows that the webcontent of the html folder have to be published.

Meine Domains » Domain easynametest.com » Domains und Subdomains » "www.easynametest.com" Warenkorb

Meine Domains

- Domains registrieren
- Domains transferieren
- Externe Domains
- Kontakte (Templates)
- Nameserver (Templates)

Mein Hosting

Mein Konto

Webmail

Support

Subdomain "www.easynametest.com"

Für die Subdomain "www.easynametest.com" können Sie aus folgenden Anzeigeeoptionen auswählen:

WebSpace Inhalt anzeigen

Wenn Sie ihre Website unter dieser Subdomain anzeigen lassen möchten, laden Sie Ihre Dateien mittels FTP in den "/html" Ordner auf dem Server. Der Pfad "/html" muss hier nicht mehr angegeben werden.

Beispiel 1: Sie laden Ihre Webseite in das Verzeichnis "/html", dann geben Sie hier "/" an.
Beispiel 2: Sie laden Ihre Webseite in das Verzeichnis "/html/ordner/", dann geben Sie hier "/ordner/" an.

Pfad:

Weiterleitung (normal)

Versteckte Weiterleitung (Frame)

Webvisitenkarte anzeigen

"Domain geparkt" Hinweis anzeigen

SPEICHERN

In a few minutes your webpage should be reachable by typing your domainname into the browser. In this example it would be <http://www.easynametest.com>